



COOKIN' WITH ANTHONY

Style Guide

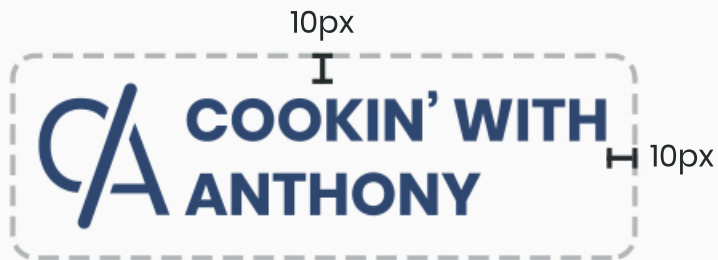
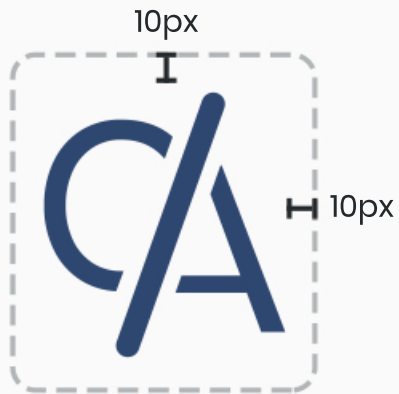




Table of Contents

Logo	03
Type	04
Colour	05
Buttons	05
Spacing	06
Photos	08

Logo



Type

Heading One

24px / 28px / 32px

Poppins SemiBold

Heading Two

20px / 24px / 28px

Poppins Medium

Heading Three

16px / 18px / 20px

Poppins SemiBold

Body

16px / 18px

Regular

Button

18px

Regular

**can add character spacing for headings if needed*

Colour



#2E4770



#920C27



#FAFAFA



#ECF1F4



#FFDAD1

LINKS

This is the default state for [links](#) with blue text.

This is the default state for [links](#) with red text.

This is the hover state for [links](#) with blue text.

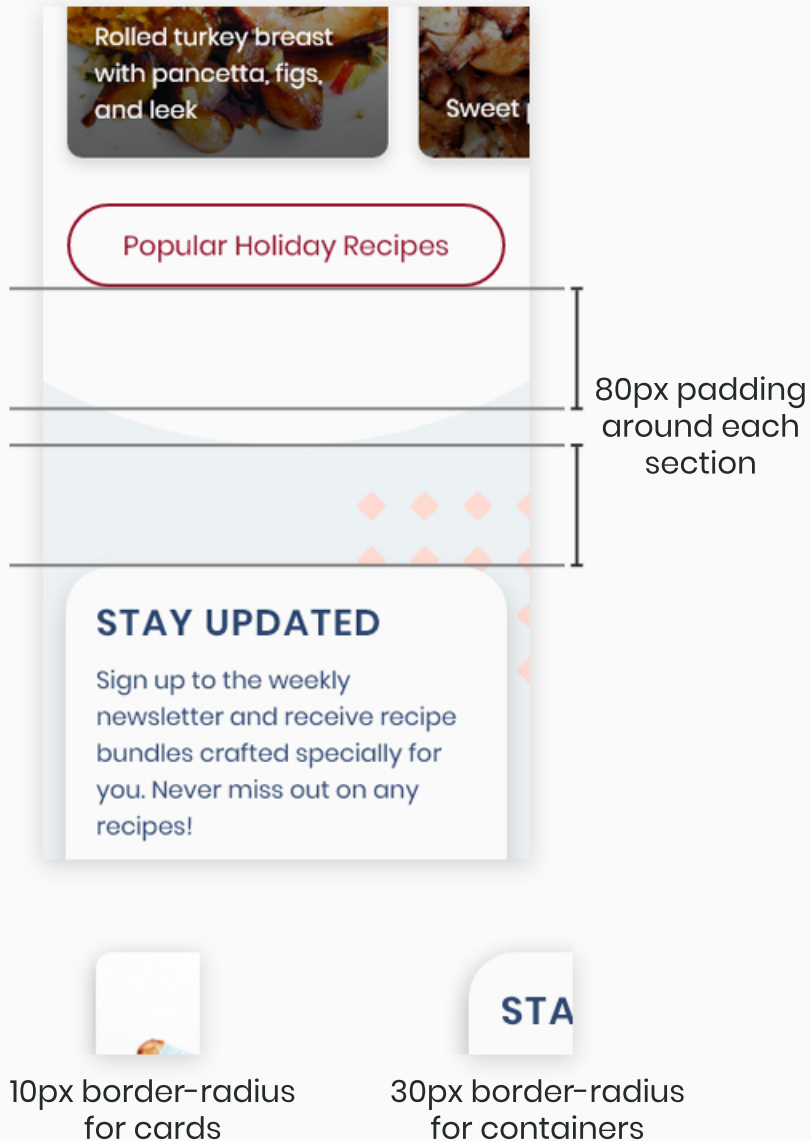
This is the hover state for [links](#) with red text.

Buttons

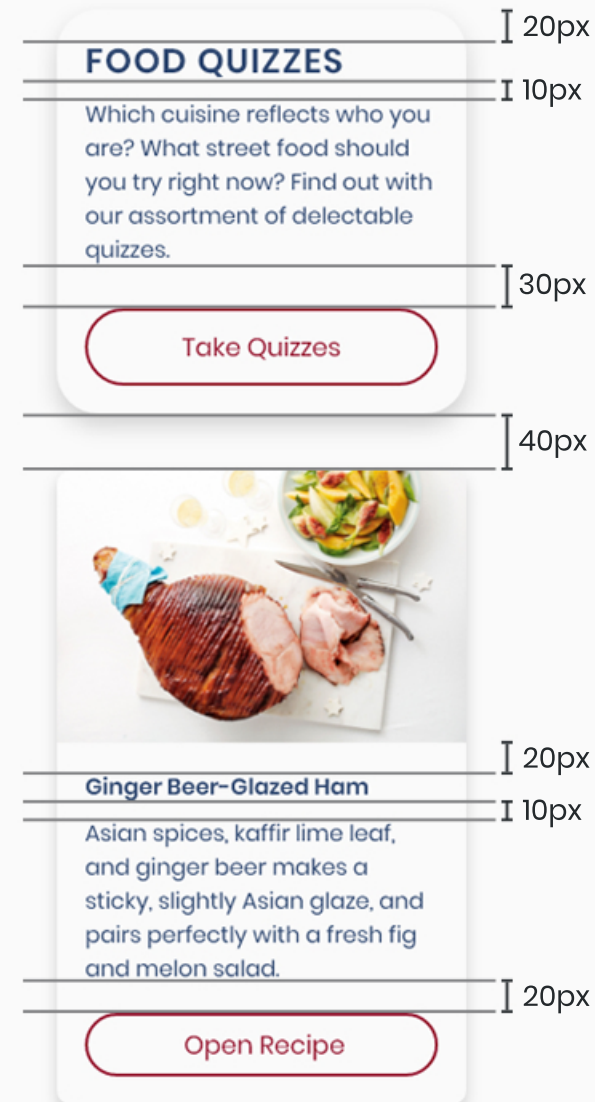
10px / 15px



Spacing



Spacing between components are in increments of 10px.



*box-shadow: 5px v-offset, 10px blur, #000000 with 16% opacity

Spacing (cont)

GRID SYSTEM

MOBILE

The mobile grid system is composed of 4 columns with a gutter between columns of 20px. The left and right margin is 16px.



TABLET

The tablet grid system is composed of 12 columns with a gutter between columns of 20px. The left and right margin is 22px.



DESKTOP

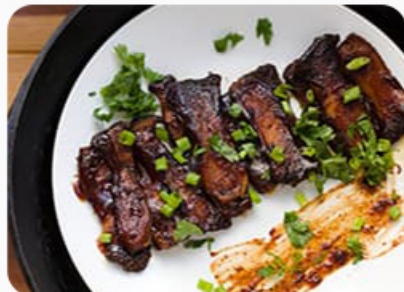
The desktop grid system is composed of 12 columns with a gutter between columns of 30px. The maximum width is 1194px, then the content will be centered.



Photos

When possible, choose well-lit photos with bright colours where the food is the main subject.

GOOD EXAMPLES



BAD EXAMPLES



**if required, add border-radius of 10px to images*